

Finance Report

AZSITE Consortium Board Meeting, 2024-10-24



AZSITE
ARIZONA'S CULTURAL
RESOURCE INVENTORY

Fund Summary 10/5/24

Arizona State Museum: AZSITE Balance Summary

Run by: RII Business Center

Date run: 10/5/2024

Fiscal Year	Period Number	Account Number	Account Name	Sub Account Number	Accounting Category Group	Beginning Fund Balance	Total Income and Transfers In	Total Expense and Transfers Out	Encumbrances and Pre-Encumbrances	Current Fund Balance	Uncommitted Cash Expenditure
2025	04	2488860	ASM - AZSITE	-	01 - Balances	133,719	0	0	0	133,719	133,719
					02 - Income	0	12,475	0	0	12,475	12,475
					03 - Expenses	0	0	35,558	123,370	(35,558)	(158,928)
				- Total	133,719	12,475	35,558	123,370	110,636	(12,734)	
2488860 Total						133,719	12,475	35,558	123,370	110,636	(12,734)

FY25 Update 10/24/24

Beginning Balance	Total Income	Total Expense + Encumbrances	Annual Balance	Current Fund Balance	Outstanding Invoices
\$133,719	\$15,825	(\$183,908)	\$(168,083)	\$108,864	\$19,070

User Applications and Billing

	2021	2022	2023	2024
User Organizations	109	114	117	132
Users	331	356	373	431
Mercator Users	218	237	259	281
\$ Invoiced	\$126,075	\$138,350	\$145,900	\$233,555
\$ Not Yet Paid	-	-	-	\$19,070

Policy on Project and Site Information from Tribal Lands

AZSITE Consortium Board Meeting, 2024-10-24



AZSITE
ARIZONA'S CULTURAL
RESOURCE INVENTORY

Draft Policy

- ▶ Developed in 2020/2021
- ▶ Consultation Letter 2021
- ▶ Consultation 2021/2022
 - ▶ Four Southern Tribes Cultural Resources Working Group
 - ▶ Pascua Yaqui Tribe
 - ▶ Yavapai-Prescott Indian Tribe
 - ▶ Navajo Nation
 - ▶ Hopi Tribe

Key Points

- ▶ “Tribal lands” [...] refer to reservations, Tribal trust lands, allotted trust lands, or fee lands as depicted in the most recent Arizona Surface Management Agencies feature service published by the Bureau of Land Management (BLM)
- ▶ AZSITE acknowledges that these boundaries do not adequately represent the ancestral lands inhabited by Indigenous peoples for thousands of years.

Policy

- ▶ AZSITE does not show project and site information from tribal lands in the Attribute Search Application, in the Map Application, or on the Mercator GIS Server.
- ▶ Project and site information from tribal lands are not provided in Data Clips unless 1) the requestor is a tribal government entity, or 2) a tribal government entity's formal endorsement is provided with the request.

Procedures

- ▶ If the GIS boundary is located entirely within tribal lands:
 - ▶ The GIS boundary is not shown.
 - ▶ The related attributes are not shown.
 - ▶ Any related documents are not posted in AZSITE.

Procedures

- ▶ If the GIS boundary is located partially on tribal lands, i.e., the GIS boundary spans a tribal land GIS boundary:
 - ▶ The portion of the GIS boundary on tribal lands is not shown.
 - ▶ The related attributes are shown, except where these indicate locations of cultural resources on tribal lands.
 - ▶ Any related documents are redacted prior to posting in AZSITE. Redactions may include:
 - ▶ Locations of sites and projects on tribal lands on document maps.
 - ▶ Narrative site descriptions or photographs of sites located on tribal lands.

Procedures

- ▶ If the GIS boundary is not located on tribal lands:
 - ▶ The GIS boundary is shown.
 - ▶ The related attributes are shown.
 - ▶ Related documents are posted.
 - ▶ If the document includes maps of other project or site locations on tribal lands, these data will be redacted.
 - ▶ If the document includes narrative site descriptions or photographs of other sites on tribal lands, these will also be redacted.

Procedures

▶ Data Clips

- ▶ Data Clip deliverables will be developed using the primary AZSITE dataset, which does not include project and site information from tribal lands as described above.
- ▶ If the area of interest for the Data Clip request includes tribal lands, and the requestor is a tribal government entity, or a tribal government entity provides a formal endorsement of the request (e.g., the requestor is a contractor of a tribal government entity):
 - ▶ Data Clip deliverables will be augmented with project and site information available to AZSITE for the portion of the area of interest located on tribal lands.

Policy on Project and Site Information from Tribal Lands

AZSITE Consortium Board Meeting, 2024-10-24



AZSITE
ARIZONA'S CULTURAL
RESOURCE INVENTORY

NPS Data Sharing Agreement

AZSITE Consortium Board Meeting, 2024-10-24



AZSITE
ARIZONA'S CULTURAL
RESOURCE INVENTORY

Draft Agreement

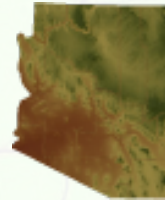
- ▶ NPS provides AZSITE with cultural resource site and survey data from Montezuma Castle and Tuzigoot National Monuments
- ▶ Year 1: NPS provides \$1,000 for GIS infrastructure dev
- ▶ Year 2+: NPS provides \$500 for hosting and maintenance

Draft Agreement

- ▶ AZSITE provides two complimentary user accounts (1 per participating park unit)
- ▶ AZSITE creates new NPS GIS data services with view-only access (no export)
- ▶ AZSITE will exclude NPS data from data clip deliverables unless approved by NPS cultural resources personnel from the relevant units
- ▶ Agreement to be reviewed/renewed after two years

NPS Data Sharing Agreement

AZSITE Consortium Board Meeting, 2024-10-24



AZSITE
ARIZONA'S CULTURAL
RESOURCE INVENTORY

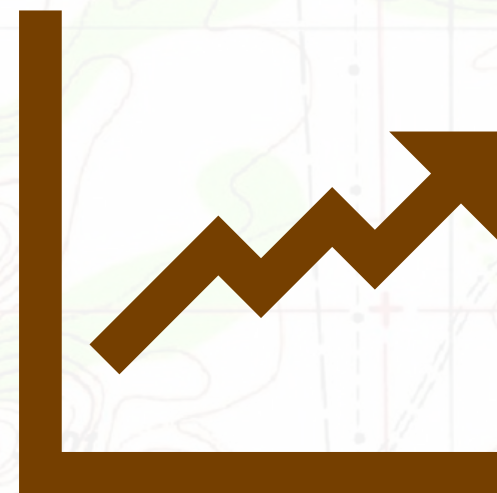
AZSITE Updates

AZSITE Consortium Board Meeting, 2024-10-24



AZSITE
ARIZONA'S CULTURAL
RESOURCE INVENTORY

Summaries



Uploads - ARO New Fee Structure

	2018	2019	2020	2021	2022	2023	2024
Projects Uploaded by Accession Year	122	212	173	154	102	21	0
Projects Uploaded by Upload Year	0	0	128	368	74	77	294
Sites Uploaded by Upload Year	-	-	167	140	177	82	27

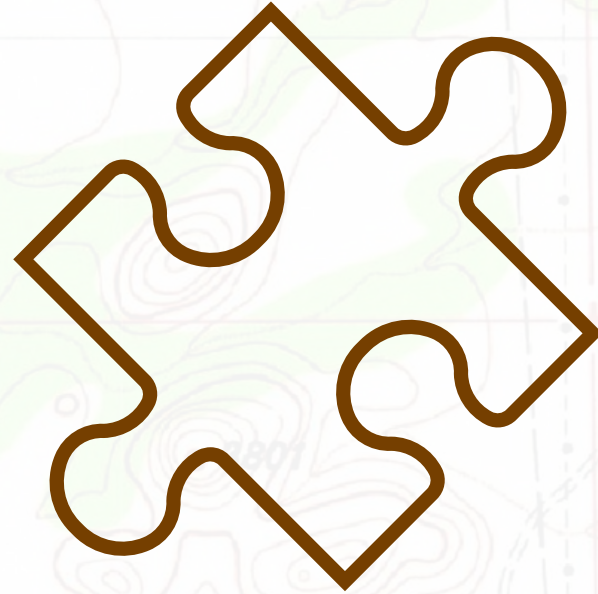
- ▶ More of these materials now available for upload
- ▶ Goal: develop an inventory of ARO new fee structure items available for upload by next meeting

Data Clip/Fix Requests

Clips	2019	2020	2021	2022	2023	2024
Requests	48	46	51	200	102	136

Fixes	2023	2024
Requests	3	50
Closed	3	47

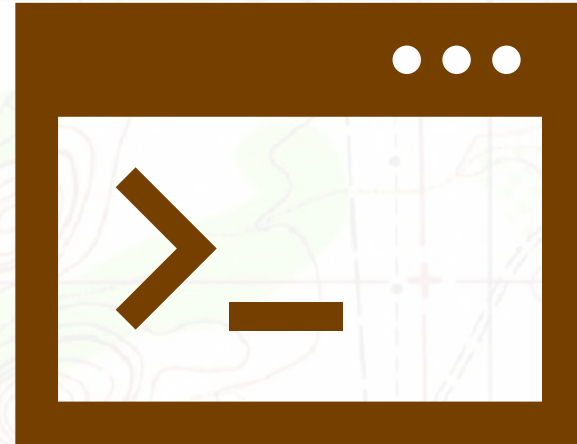
ASM Strategic Planning



Draft Objectives

- ▶ Assess and improve ASM data completeness/contemporaneity
- ▶ Continue to work with ARO to streamline data sharing and improve the ASM-AZSITE Interface
- ▶ Improve Historic Districts and Historic Structures Datasets
- ▶ Expand AZSITE's non-ASM datasets
- ▶ Modernization and Migration Planning and Prioritization
- ▶ Admin framework update

Other Updates



Data

- ▶ USFWS site and survey data
- ▶ Additional federal agency outreach
- ▶ ASU site cards, MNA reports - digitization
- ▶ ASM LARC migrated - waiting on updated keys for links from AZSITE

Development

- ▶ Data Clip ticketing/delivery
- ▶ Attribute Search enhancements staged on dev server
 - ▶ USFWS document library
 - ▶ Links are active
 - ▶ E.g. SRP DCS, data clips
 - ▶ MNA reports
 - ▶ Bug fixes
- ▶ Blog - weekly upload summary/details

Grants

▶ NPS Preservation Technology and Training Grant

▶ Opens “Late October 2024”

▶ “PTT Grants will support the following activities: Innovative research that develops new technologies or adapts existing technologies to preserve cultural resources (typically \$20,000)”

▶ “Media: how-to videos, podcasts, best practices publications, or webinars that disseminate practical preservation methods or provide better tools for preservation practice (typically \$5,000 to \$15,000) ”

▶ South 32/AACD funds for tribal government accounts

▶ 5/16 accounts requested

New Business for Q1 2025 Meeting

- ▶ Submission Guidelines (for non-ASM data)
- ▶ Data Sensitivity Training



Q&A